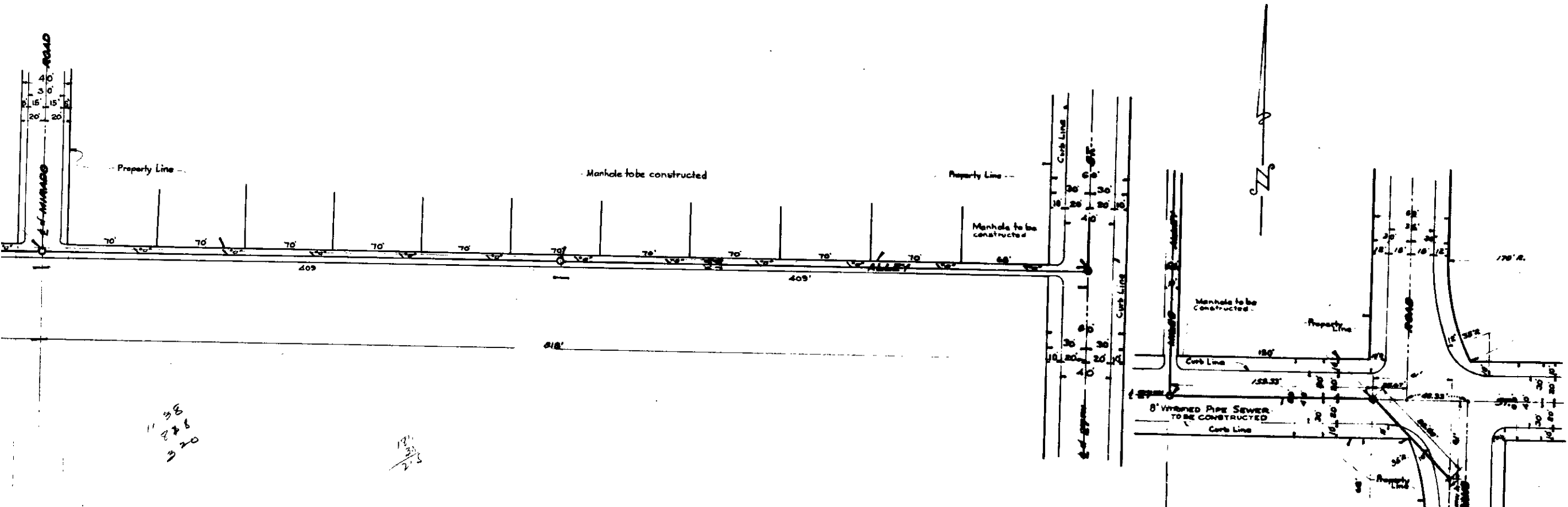
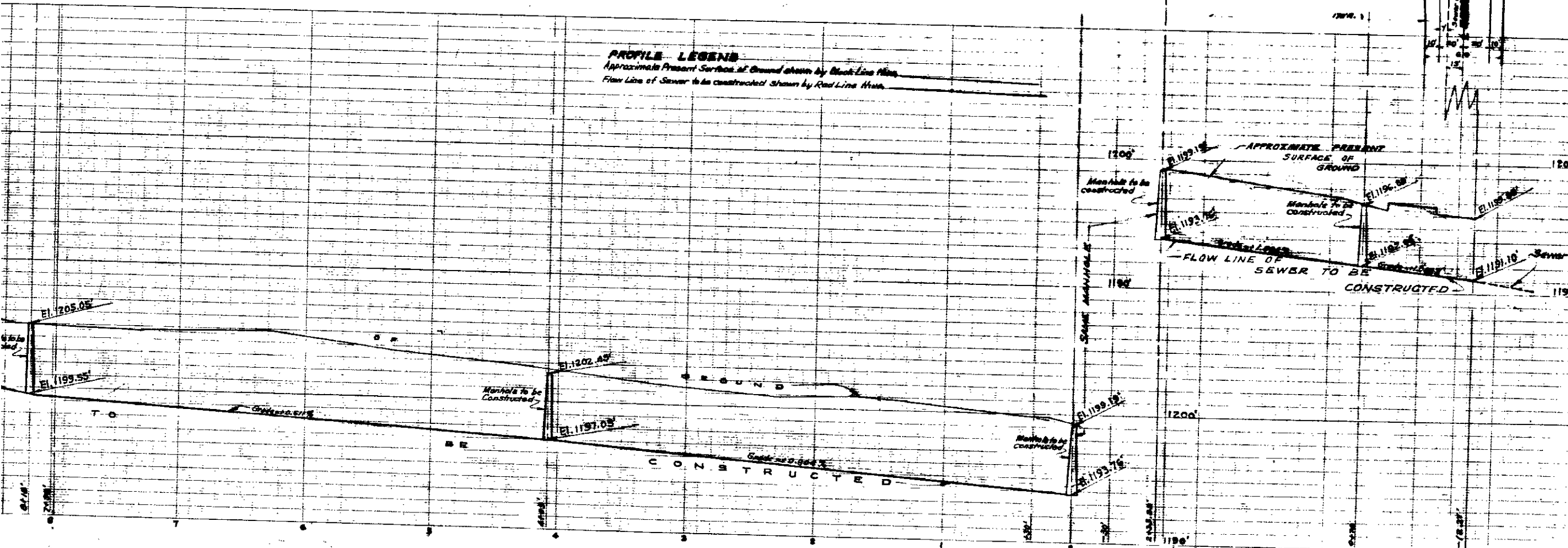


SHEET NO 1
 PLAN NO 1791
 FOR
MILES ALLEY SEWER
 BETWEEN
 27TH STREET AND MARSHALL BOULEVARD
 CITY OF SAN BERNARDINO
 CALIFORNIA

AUGUST 1948
 R.D. FORBETT
 Acting City Engineer
 PLAN ADOPTED September 7, 1948



38
 226
 220



PROFILE LEGEND
 Approximate Present Surface of Ground shown by Black Line Here
 Flow Line of Sewer to be constructed shown by Red Line Here

LEGEND
 For its construction or future 8 inches Vitrified Pipe
 for its future use or later 8 inches Vitrified Pipe
 Approximate Present Surface of Ground
 Approximate Present Surface of Ground
 8 inches Vitrified Pipe Sewer to be constructed
 8 inches Vitrified Pipe Sewer to be constructed
 Manholes to be constructed shown thus
 Sewer now in shown thus

SEWER DETAIL
 8 inches Vitrified Pipe Sewer to be constructed
 8 inches Vitrified Pipe Sewer to be constructed
 Manholes to be constructed

TITLE TO STREETS
 MILES ALLEY was dedicated by map of 30x60 ft. lots
 recorded in book 30 of maps, of page 50 records
 of San Bernardino County, California.
 MILES ALLEY named by Resolution No. 1521 of the City of
 San Bernardino, California adopted July 12, 1948.
 27th STREET was dedicated by map of Shanda McWhirter
 tract No. 1726, recorded in book 30 of maps, of page 50
 of maps of San Bernardino, California.
 MARSHALL ROAD was dedicated by map of San Bernardino County and
 by deed recorded May 6, 1900, in book 608 of official records of page 383, records
 of San Bernardino County, California.

GRADE ORDINANCE
 Grade of MILES ALLEY was established by Ordinance
 No. 1561 of the City of San Bernardino, California,
 July 19, 1948.

DATUM
 All elevations shown in this plan are in feet and are
 above a plane which is 10 feet below the
 City Bench Mark as established by Ordinance
 583 of the City of San Bernardino, California.